

项目 Mapx	变更内容 Modification	日期 Date	修改人 Draw	核准 Approve
------------	----------------------	------------	-------------	---------------

规格说明: Specifications:

电气特性: Electrical:

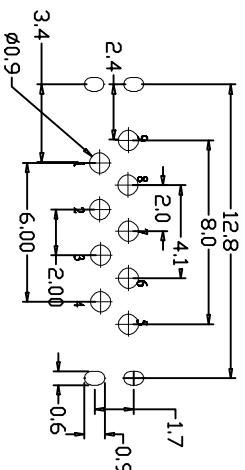
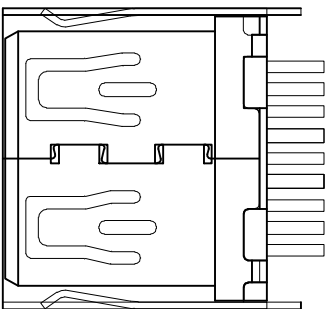
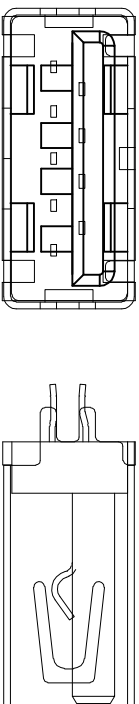
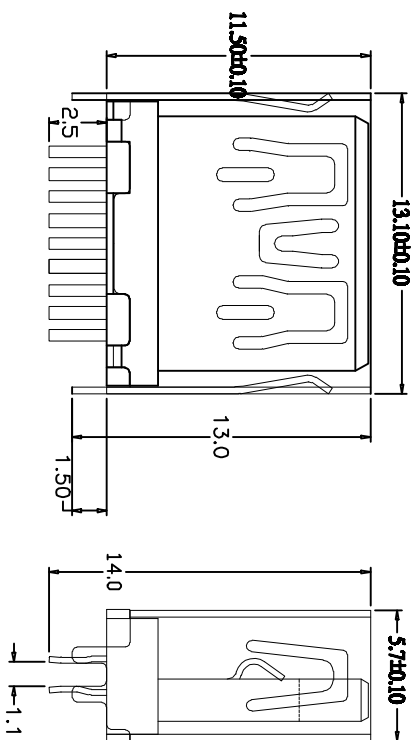
- 额定电流: Current Rating
1.5A/contact terminal
- 额定电压: Voltage Rating
30V DC
- 接触阻抗: Contact Resistance
30 milliohms MAX
- 额定电压: Dielectric Withstanding Voltage:
500 V AC AT Sea Level
- 绝缘阻抗: Insulation Resistance:
1000MEGA ohms MIN

物理性能: Mechanical:

- 插拔力: Connector Mate and Unmate Force
Mate force: 3.57kgf(MAX)
Unmate force: 1.02kgf(MIN)

原材料: Material:

- 塑壳: Housing:
Hing Temperature Thermoplastics,
- 端子: Contact: Copper Alloy C2680
- 外壳: Shell: Copper Alloy C2680/SPCC



PN	NU_BER	SIGNAL NAME
1		USB电压
2		D-(负极)
3		D+(正极)
4		地线
5		SSRX-
6		SSRX+
7		GND(接地)
8		SSRX-
9		SSRX+
		SHIELD

MANUFACTURE DWG		产品图	
公差一覽表		公差一覽表	
TOLERANCE UNLESS OTHERWISE SPECIFIED			
X.±0.20	X.±5°	DATE	2016.10.20
XX±0.10	.X±2°	CHECKED	审核
XXX±0.02	.XX±1°	APPROVE	核准
		UNIT	MM
		SCALE	1:1
		DESIGN	LUFU
		NAME	廖志
		VER	A0
		DWG NO.	未编3.014
		SHEET	001