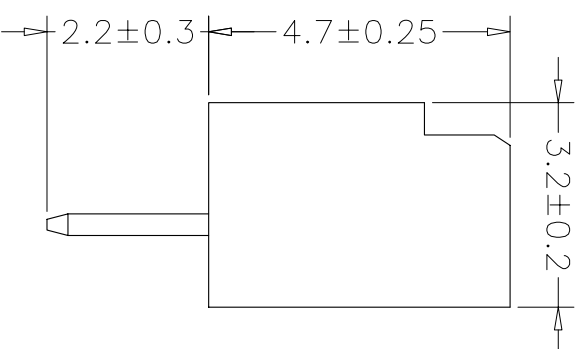
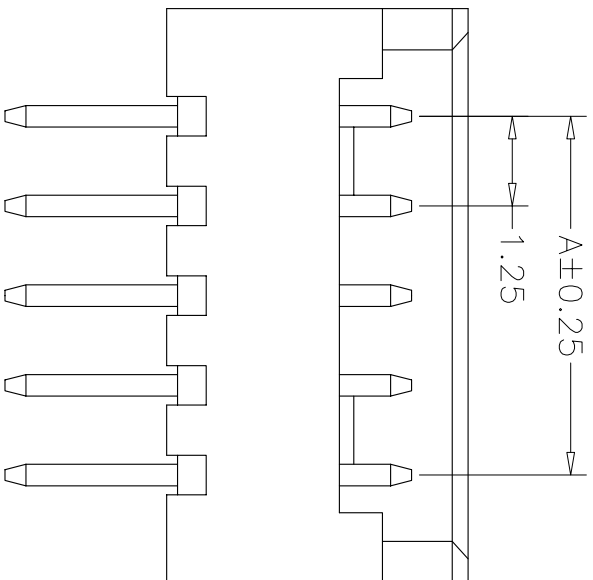


PCB LAYOUT



Dimension: A = (Pos-1) * 1.25

B = A + 3.00

Wafer (Straight)

Positions : 2~15 Circuits
 Insulator : Nylon-66 or PBT
 Contact : Phosphor Bronze
 Plated : Tin-plated 50u" Min
 Color : White

SPECIFICATIONS

Current Rating : 1AMP
 Temperature Range : -40 。 C to +105 。 C
 Contact Resistance : 20m Ω Max
 Insulation Resistance : 1000M Ω Min
 Withstanding Voltage : AC 500V

XYFWCN

类注公差		X: ±0.35 X.X: ±0.25 X.XX: ±0.20 X.XXX: ±0.15	品名规格	1.25 wafer 180度		
Size: A4	UNIT: mm		客户品号	版本	制图	审核
Scale: 1:1			A/0	易红	王笑	核准
						日期
						2008-6-28