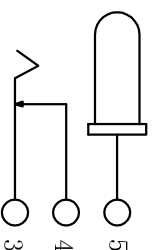
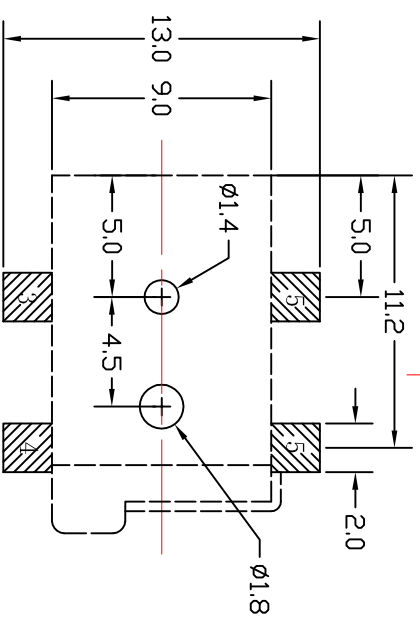


PIN	$\phi 2.0$	$\phi 2.5$
APPD		



SCHEMATIC



P.C.B LAND

No	DESCRIPTION	QTY	MATERIAL	PLATING	Specifications
1	HOUSING	1	PA46		Ratings: DC 30V 0.5A
2	SPRING	1	Be-Cu	Ag-Plating	Contact Resistance: 30m ohm max
3	CURVE PIECE	1	BRASS	Ag-Plating	Insulation Resistance: 100M ohm at 500V
4	CONTACT FOOT	1	BRASS	Ag-Plating	Dielectric Strength: AC 500V for 1 Minute
5	PIN	1	BRASS	Ag-Plating	Insertion & Extraction Force: 0.3-1.5Kg
					Life: 5,000 Cycles

DC-050-SMD

TITLE: DC JACK

UNLESS OTHERWISE

PECIFIED

TOLERANCE ± 0.2

ANGLE TOL $\pm 30^\circ$

UNIT: mm SCALE: NA

DRAWN: CHENG

DATE: 2004-04-08

CHECKED:

DATE:

APPROVED:

DATE:

XYFWCN (www.xyfwcn.en.alibaba.com)

